

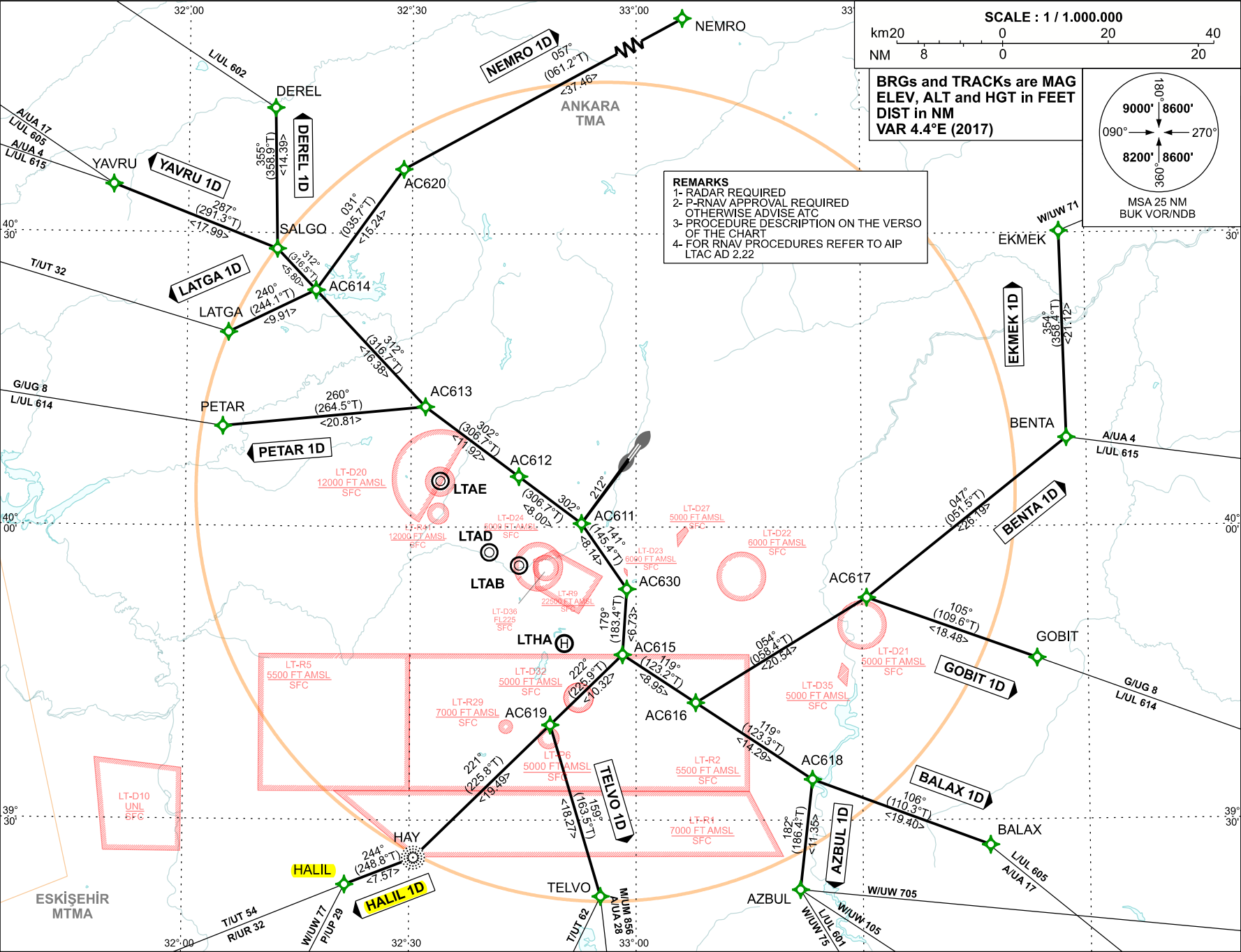
STANDARD DEPARTURE
CHART INSTRUMENT (SID)
ICAO

TRANSITION ALTITUDE
10 000 FT

TWR : 118.1 - 257.8
APP : 119.6 - 119.1

ANKARA/ESENBOĞA
RNAV (GNSS)
RWY 21L/R

CHANGE: LT-D36 LIMITS



DHMI - ANKARA

AIRAC AMDT 02/22

ESENBOGA AIRPORT RNAV (GNSS) SID RWY 21L/21R

Designator	Formal Description	Abbreviated Description	Climb
DEREL 1D	To AC611 on course 212° M max speed 230kts, turn right to AC612, to AC613, turn right to AC614 at or below 16000 ft, to SALGO, turn right to DEREL	AC611[M212;K230-;R]-AC612-AC613[R]-AC614[A16000-]-SALGO[R]-DEREL	16000 FT
YAVRU 1D	To AC611 on course 212° M max speed 230kts, turn right to AC612, to AC613, turn right to AC614 at or below 16000 ft, to SALGO, turn left to YAVRU	AC611[M212;K230-;R]-AC612-AC613[R]-AC614[A16000-]-SALGO[L]-YAVRU	
LATGA 1D	To AC611 on course 212° M max speed 230kts, turn right to AC612, to AC613, turn right to AC614 at or below 16000 ft, turn left to LATGA	AC611[M212;K230-;R]-AC612-AC613[R]-AC614[A16000-;L]-LATGA	
PETAR 1D	To AC611 on course 212° M max speed 230kts, turn right to AC612, to AC613, turn left to PETAR	AC611[M212;K230-;R]-AC612-AC613[L]-PETAR	
NEMRO 1D	To AC611 on course 212° M max speed 230kts, turn right to AC612, to AC613, turn right to AC614 at or below 16000 ft, turn right to AC620, turn right to NEMRO	AC611[M212;K230-;R]-AC612-AC613[R]-AC614[A16000-;R]-AC620[R]-NEMRO	
EKMEK 1D	To AC611 on course 212° M max speed 230kts, turn left to AC630, turn right to AC615, turn left to AC616 at or below 15000 ft, turn left to AC617, turn left to BENTA, turn left to EKMEK	AC611[M212;K230-;L]-AC630[R]-AC615[L]-AC616[A15000-;L]-AC617[L]-BENTA[L]-EKMEK	15000 FT
BENTA 1D	To AC611 on course 212° M max speed 230kts, turn left to AC630, turn right to AC615, turn left to AC616 at or below 15000 ft, turn left to AC617, turn left to BENTA	AC611[M212;K230-;L]-AC630[R]-AC615[L]-AC616[A15000-;L]-AC617[L]-BENTA	
GOBIT 1D	To AC611 on course 212° M max speed 230kts, turn left to AC630, turn right to AC615, turn left to AC616 at or below 15000 ft, turn left to AC617, turn right to GOBIT	AC611[M212;K230-;L]-AC630[R]-AC615[L]-AC616[A15000-;L]-AC617[R]-GOBIT	
BALAX 1D	To AC611 on course 212° M max speed 230kts, turn left to AC630, turn right to AC615, turn left to AC616 at or below 15000 ft, to AC618, turn left to BALAX	AC611[M212;K230-;L]-AC630[R]-AC615[L]-AC616[A15000-]-AC618[L]-BALAX	
AZBUL 1D	To AC611 on course 212° M max speed 230kts, turn left to AC630, turn right to AC615, turn left to AC616 at or below 15000 ft, to AC618, turn right to AZBUL	AC611[M212;K230-;L]-AC630[R]-AC615[L]-AC616[A15000-]-AC618[R]-AZBUL	
TELVO 1D	To AC611 on course 212° M max speed 230kts, turn left to AC630, turn right to AC615, turn right to AC619, turn left to TELVO	AC611[M212;K230-;L]-AC630[R]-AC615[R]-AC619[L]-TELVO	
HALIL 1D	To AC611 on course 212° M max speed 230kts, turn left to AC630, turn right to AC615, turn right to AC619, to HAY, turn right to HALIL	AC611[M212;K230-;L]-AC630[R]-AC615[R]-AC619-HAY[R]-HALIL	

Note1: All SIDs require minimum climb gradient 4 % (243 FT/NM) up to 10000 FT**Note2: Check ATIS to confirm the published frequency is the current one in use. At first contact report only call sign.**

Type	Fix identifier (Waypoint name)	Latitude	Longitude
FlyBy	AC611	40:00:25.62 N	32:52:45.14 E
FlyBy	AC612	40:05:12.70 N	32:44:23.69 E
FlyBy	AC613	40:12:19.15 N	32:31:54.65 E
FlyBy	AC614	40:24:13.67 N	32:17:11.65 E
FlyBy	AC615	39:47:00.03 N	32:58:12.41 E
FlyBy	AC616	39:42:05.44 N	33:07:54.39 E
FlyBy	AC617	39:52:49.02 N	33:30:37.96 E
FlyBy	AC618	39:34:13.12 N	33:23:21.32 E
FlyBy	AC619	39:39:48.33 N	32:48:36.34 E
FlyBy	AC620	40:36:36.44 N	32:28:51.70 E
FlyBy	AC630	39:53:43.24 N	32:58:46.05 E
FlyBy	AZBUL	39:22:56.00 N	33:21:43.00 E
FlyBy	BALAX	39:27:27.17 N	33:46:50.78 E

Type	Fix identifier (Waypoint name)	Latitude	Longitude
FlyBy	DEREL	40:42:50.00 N	32:11:36.00 E
FlyBy	NEMRO	40:54:30.42 N	33:12:10.29 E
FlyBy	EKMEK	40:30:12.87 N	33:56:35.86 E
FlyBy	GOBIT	39:46:34.07 N	33:53:12.95 E
FlyBy	HAY	39:26:11.00 N	32:30:34.00 E
FlyBy	HALIL	39:23:26.00 N	32:21:28.00 E
FlyBy	LATGA	40:19:53.00 N	32:05:32.00 E
FlyBy	PETAR	40:10:16.00 N	32:04:53.00 E
FlyBy	SALGO	40:28:26.00 N	32:11:58.00 E
FlyBy	TELVO	39:22:16.00 N	32:55:18.00 E
FlyBy	BENTA	40:09:05.32 N	33:57:21.45 E
FlyBy	YAVRU	40:34:56.00 N	31:49:58.00 E